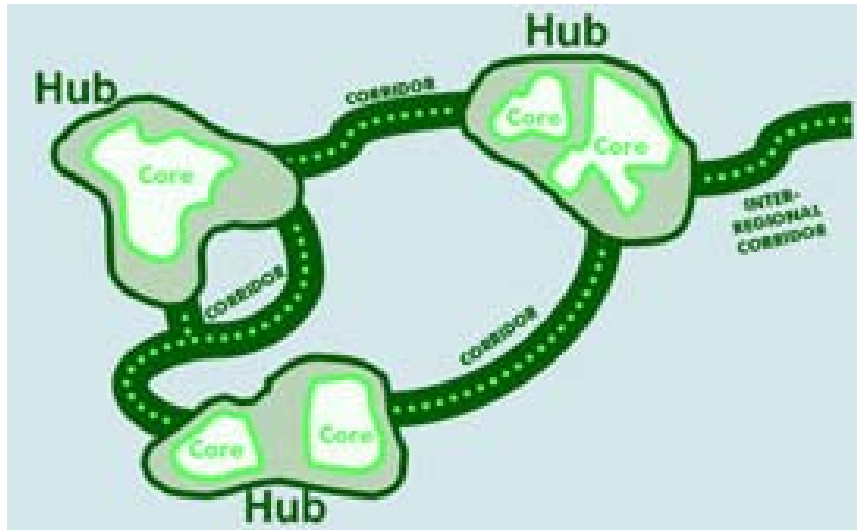


Greater Baltimore Wilderness: State Initiatives and Green Infrastructure Resources

Christine Conn
Director, Integrated Policy and Review, MDNR
2015 New Partners for Smart Growth Conference

Statewide Green Infrastructure

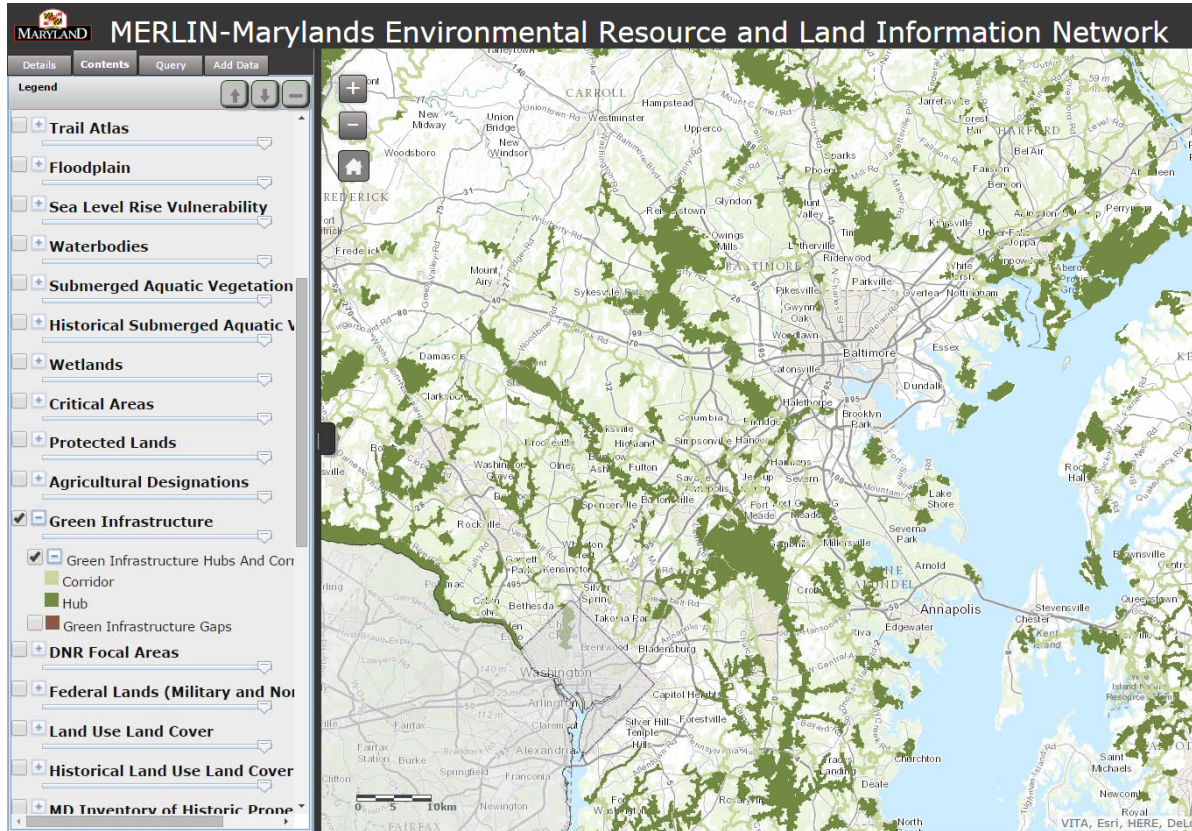


Landscape Scale Ecological Network

- Biodiversity
- Ecosystem Services
- Community connections to nature

- Hubs
 - Large blocks of forests and wetlands 250 acres or greater
 - Other important wildlife and protected natural areas 100 acres or greater
- Corridors
 - Best ecological linkages between Hubs
 - 1,100 feet wide

Green Infrastructure Guides State Investments



- Land Conservation
- Chesapeake Bay Restoration
- Public Recreation

Resiliency: Inland Flood Management



Planning for Sea Level Rise

Sea level along Maryland's shorelines could rise 2 feet by 2050





Land Conservation in Maryland

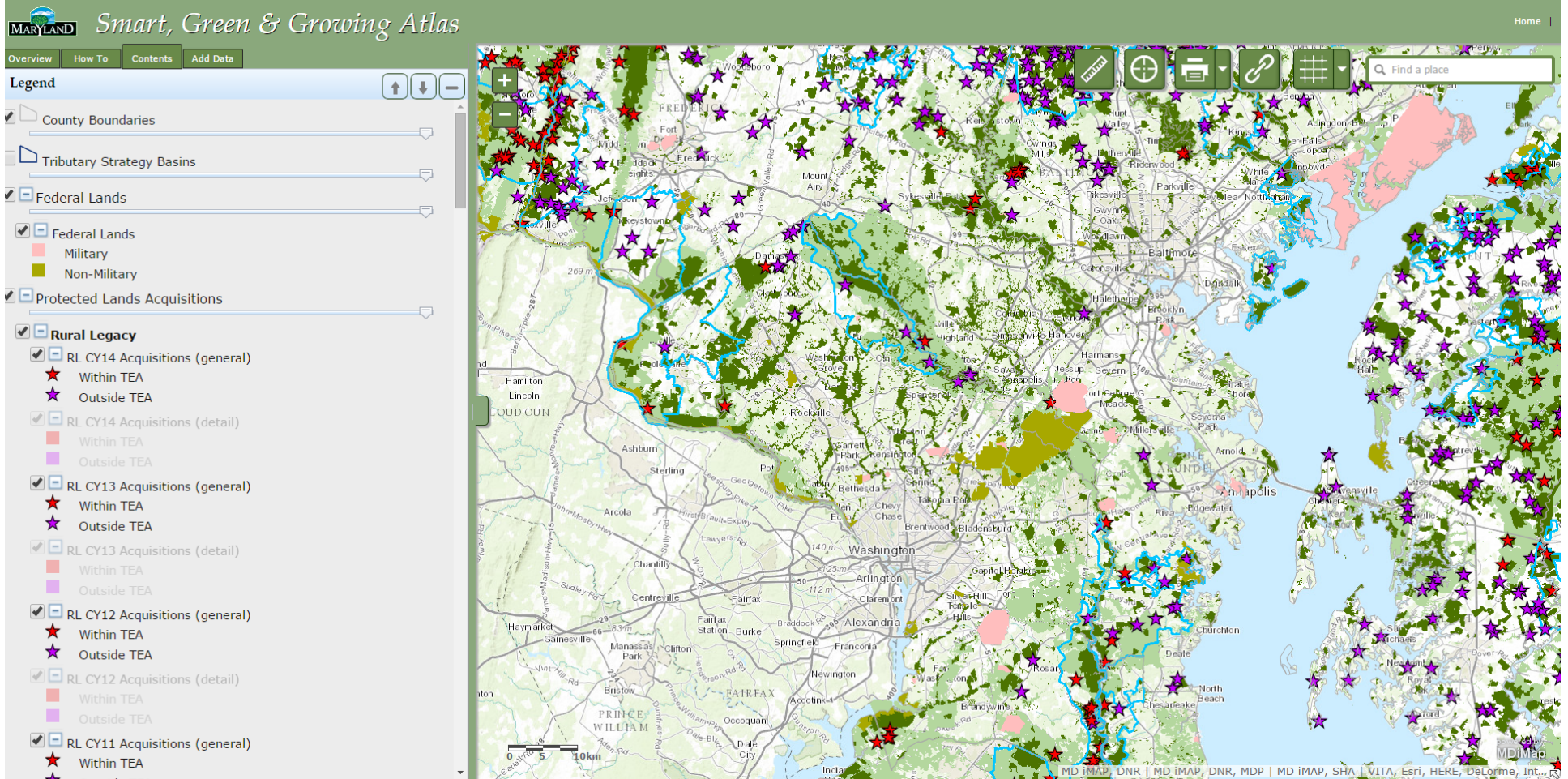
- Program Open Space established in 1969
- Funded by 0.5% Real Estate Transfer Tax
- 322,618 acres (10/2/14) conserved and over 4,000 parks created
- Conservation Objectives
 - Ecological, Open Space and Recreation = POS/GreenPrint
 - Agricultural and Rural Landscapes



<http://www.greenprint.maryland.gov/programs.asp>



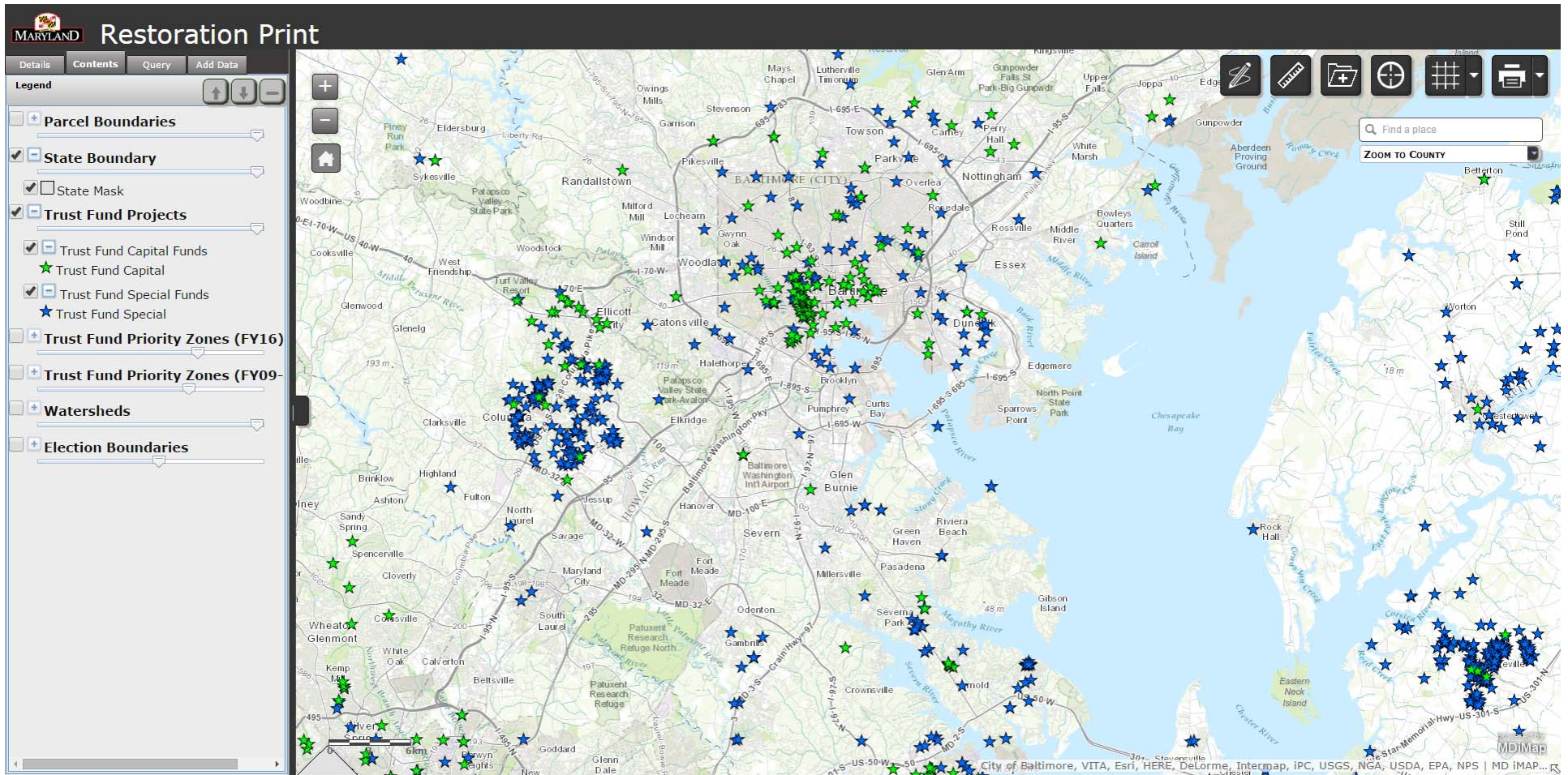
Targeting State Conservation Dollars





Restoration in GBW Region

Fiscal Year 2014 Trust Fund Budget: \$68 M



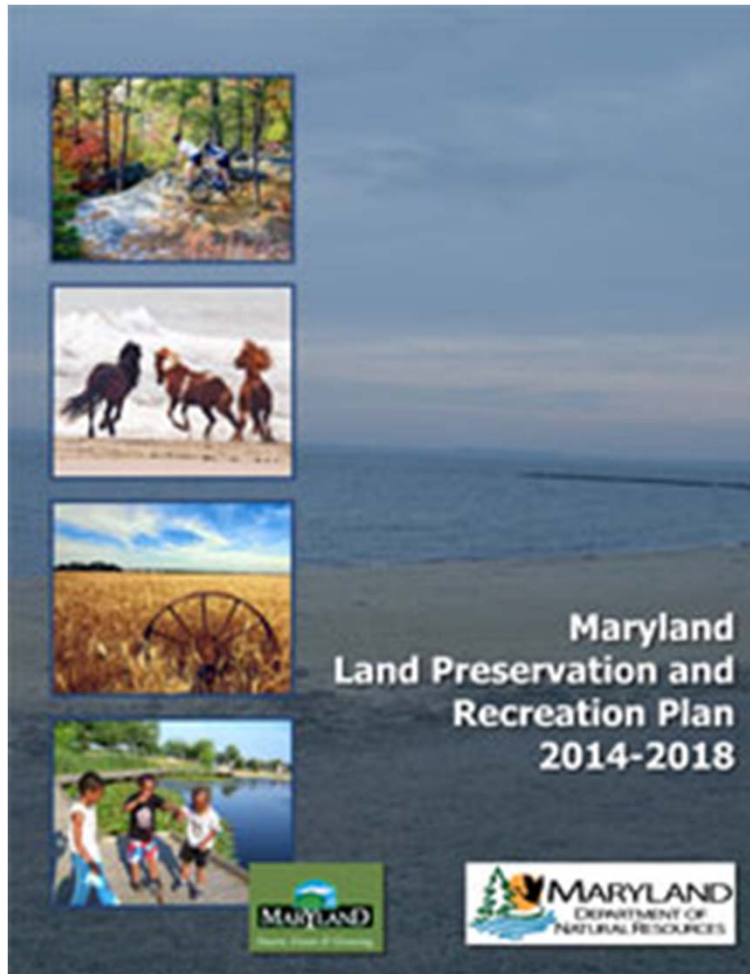
Chesapeake Bay Restoration and Resiliency

EXISTING BMPS PROVIDE A VALUE ADDED BENEFIT FOR REDUCING CLIMATE RISK

Management Practice	Nutrient Benefit	Climate Resilience Benefit				
		Temperature Reduction	Storm Buffer	Drought Buffer	Sea Level Rise Buffer	Wildlife Corridor
Wastewater Treatment Plant	●			●		
Stream Restoration	●	◐	◐			●
Forest Buffer	●	●	●			●
Wetlands	●		●	●	●	●
Infiltration	●		●	●		
Shoreline Erosion Control	●		●		●	
Vegetated Open Channel	●		◐			

* Practices designated with a ◐ potentially buffer climate impacts and could be enhanced through modifications suggested in this document.

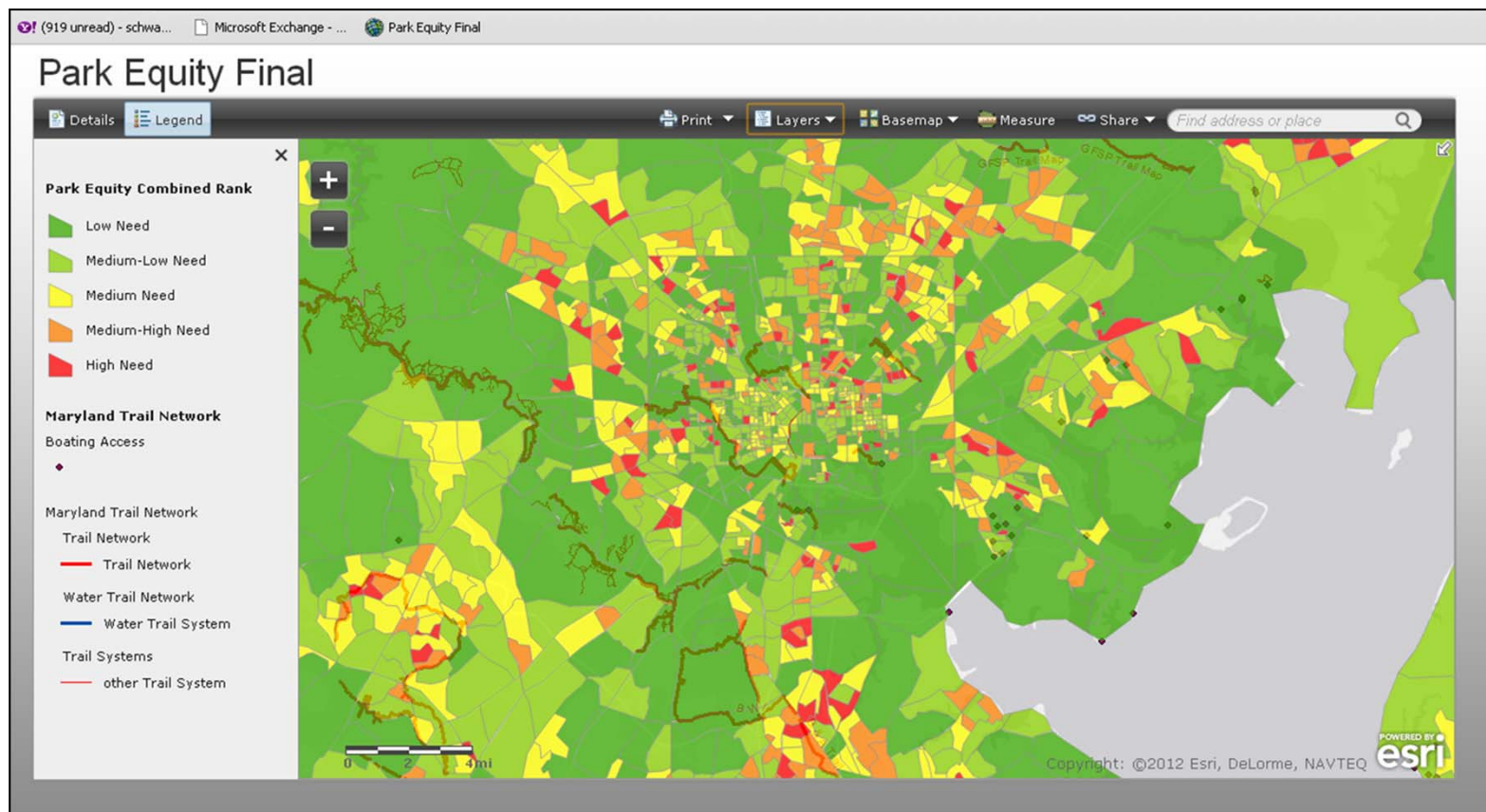
Equity: Connecting Marylanders to Green Space



- Identify areas in need of access to park space
- Streamline green space funding programs
- Aid local partners in planning for green infrastructure and park and recreation development opportunities
- Help identify green space needs in school construction and public facility planning
- Be combined with other data layers such as health data for planning purposes

Park Equity Analysis

Factors: 1) Income Levels, 2) Ratio of Children, 3) Population Density, 4) Proximity to Park Space





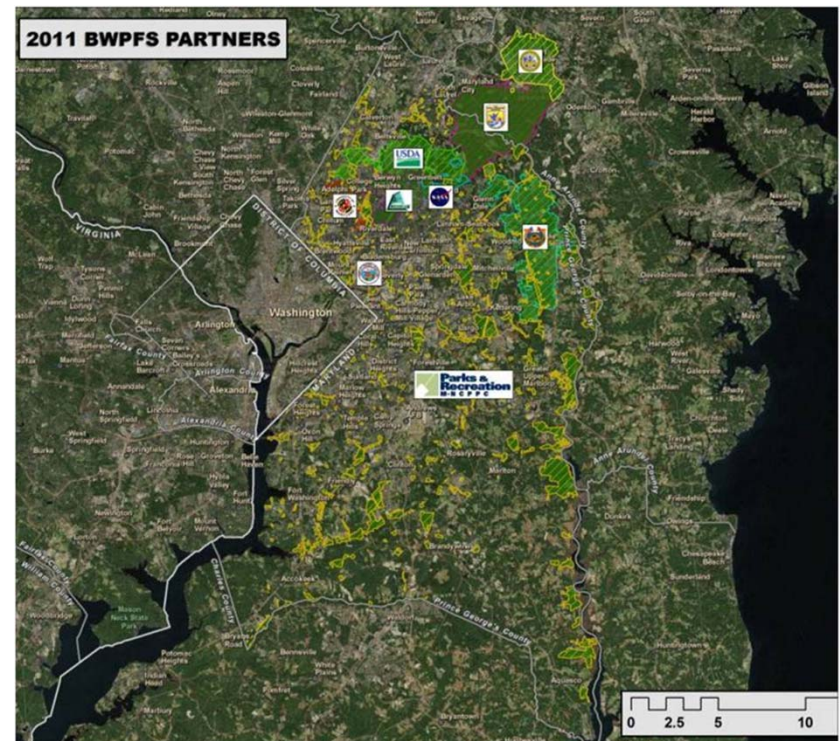
Implementation Partnerships

Baltimore Washington Partners for Forest Stewardship

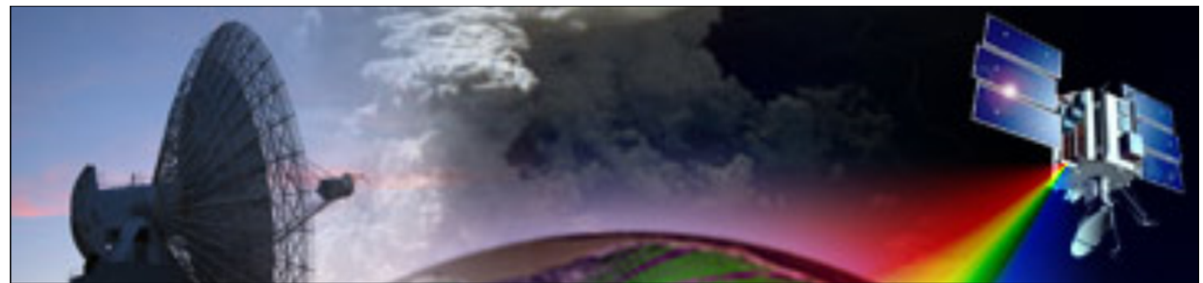
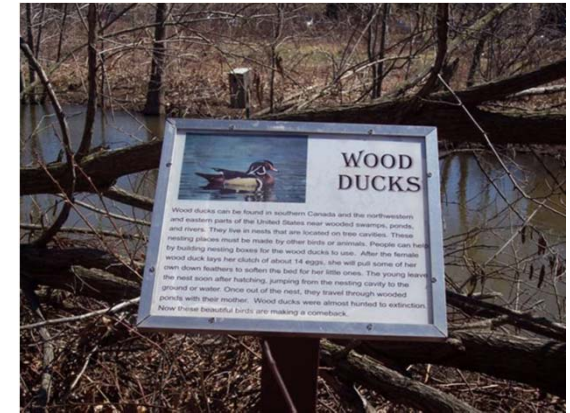
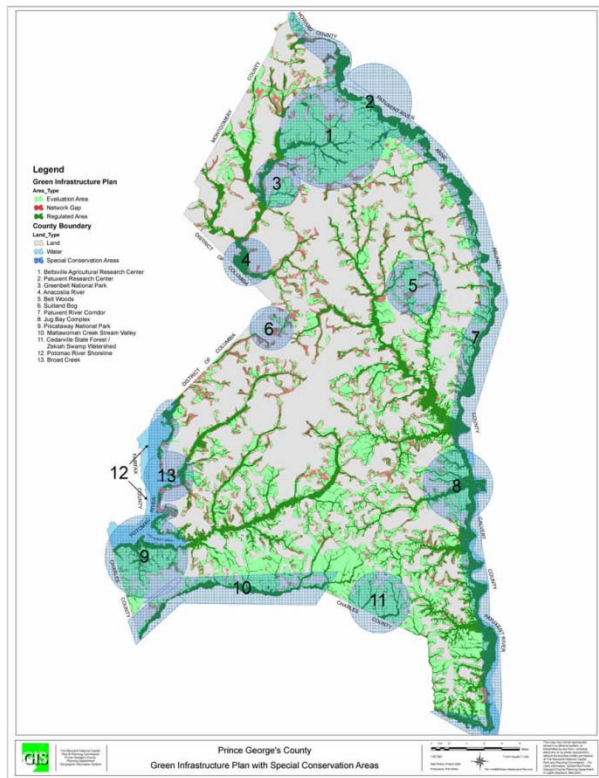
Mission: Promote collaborative strategies for the restoration, conservation and stewardship of shared forested ecosystems and managed lands in the Baltimore Washington corridor

Over 69,000 acres of land collectively managed

- USDA Agricultural Research Services Beltsville Agricultural Research Center
- US Army Fort George G. Meade,
- NASA/Goddard Space Flight Center
- USFWS Patuxent Research Refuge
- US Secret Service
- US Forest Service
- US Geological Survey
- National Park Service
- Maryland Dept. Natural Resources
- University of Maryland
- Maryland-National Capital Park and Planning Commission
- City of Greenbelt
- City of Hyattsville
- City of Bowie
- Town of Cheverly
- Center for Chesapeake Communities



Multiple Scales, Multiple Partners, Multiple Strategies



For More Information



Christine Conn, Director
Integrated Policy and Review
Maryland Department of Natural Resources
Christine.Conn@Maryland.gov